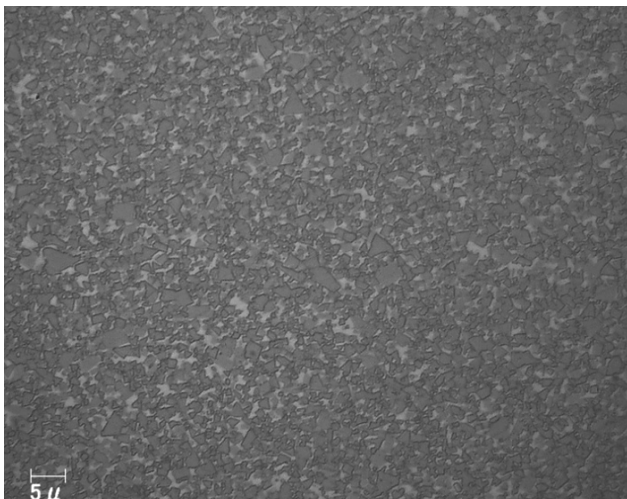
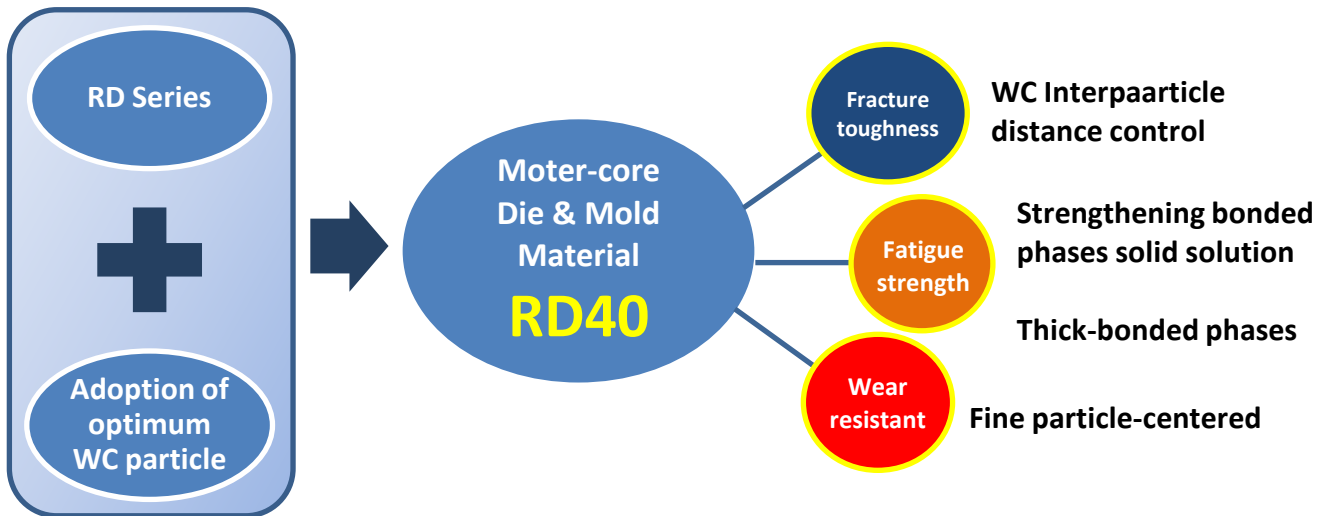


MOTER-CORE DIE & MOLD MATERIAL: RD40



RD40 Microstructure

RD40 is an excellent material both in terms of wear resistance and fracture toughness by optimizing WC particle of our RD series. It is suitable for applying moter-core die and precision mold of complex shape.

With the two characteristics, fracture of mold can be inhibited without detriment to wear resistance. The material is possible to be processed into near-net-shape of mold by high-strength. Lower cost performance is provided.

RD40 Mechanical Characteristics

Material Grade	Density (g/cm ³)	Hardness (HRA)	TRS (GPa)	Compressive Strength (GPa)	Fracture Toughness (MPa·m ^{1/2})
RD40	14.10	89.4	3.7	4.8	17

We provide many material grades to meet your needs.
Please feel free to inquire.

Address : 290-44 Takahashi, Fukusaki-cho, Kanzaki-gun, Hyogo-ken, 679-2216, JAPAN

Tel. 0790-24-2280 Fax. 0790-24-2290

URL: <http://www.sanalloy.co.jp>